



# PANEL FABRICATION

## ABB PILOT LIGHTS CL, MP1-MLF SERIES

### DESCRIPTION

The ABB CL, MP1-MLFPT series pilot lights and push to test are both LED style and come in many colors. There are also press-to-test pilot lights. These devices use the IEC style of buttons, plus offer economical pricing.

### FEATURES

- 22.5 mm size
- Quick release contact blocks
- Press-to-test pilot light offered

### SPECIFICATIONS

<b>Contact Rating</b>	AC: 120V, 6A; 240V, 3A; 480V, 1.5A; 600V, 1.2A DC: 120V, 0.55A; 240V, 0.27A; 480V, 0.1A; 600V, 0.1A
<b>Rated Insulation Voltage</b>	690V
<b>Mechanical Life</b>	10 million operations (contact block)
<b>Terminals</b>	#14-20 AWG
<b>Contact Material</b>	Silver
<b>Mounting</b>	0.874" (2.25 cm) hole
<b>Operating Temperature</b>	-13° to 122°F (-25° to 50°C)
<b>Panel Thickness</b>	0.059" to 0.236" (0.15 to 0.6 cm)
<b>Protection Rating</b>	NEMA type 1, 3R, 4, 4X, 12, 13
<b>Approvals</b>	UL listed, File #E76003; CSA certified, File #LR19700
<b>Warranty</b>	1 year



Pilot Light

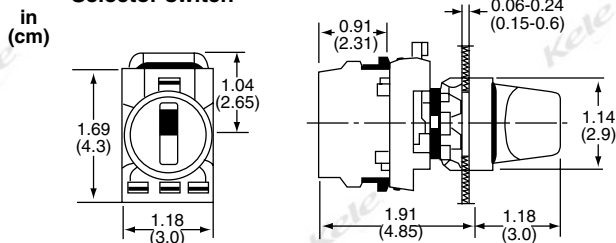


SSG1-67

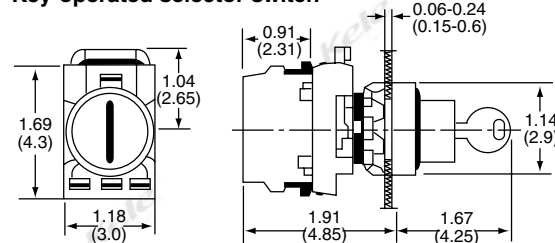


### DIMENSIONS

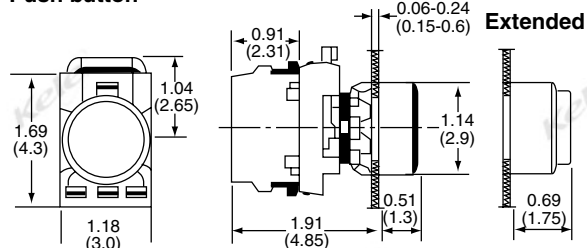
#### Selector switch



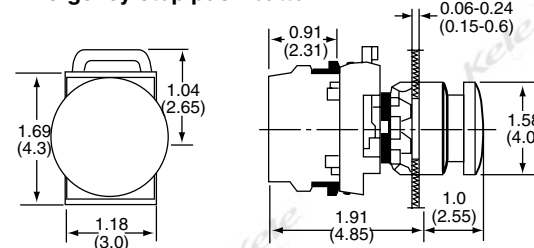
#### Key-operated selector switch



#### Push button



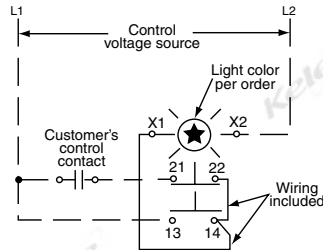
#### Emergency stop push button



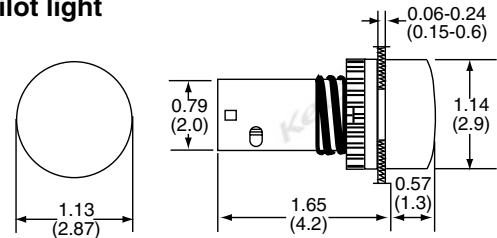


### DIMENSIONS (CONTINUED)

#### Press-to-test Pilot light schematic



#### Pilot light



### ORDERING INFORMATION

#### PILOT LIGHTS

<b>CL</b>	Pilot light with integrated LED
<b>502</b>	24 VAC/VDC
<b>513</b>	110-130 VAC
<b>Color</b>	R-Red, G-Green, Y-Yellow, L-Blue, W-White

#### PRESS-TO-TEST PILOT LIGHTS

<b>MP1-MLFPT</b>	Press-to-test illuminated pilot light including one normally open and one normally closed contact
<b>8</b>	24V full voltage incandescent
<b>1</b>	120V full voltage incandescent
<b>L8</b>	24V LED
<b>L1</b>	120V LED
<b>Color</b>	R-Red, G-Green, Y- Yellow, L- Blue, W-White

#### RELATED PRODUCTS

<b>E-1PBG</b>	One-hole NEMA 12/13 push-button enclosure
<b>E-2PBG</b>	Two-hole NEMA 12/13 push-button enclosure
<b>E-3PBG</b>	Three-hole NEMA 12/13 push-button enclosure
<b>E-4PBG</b>	Four-hole NEMA 12/13 push-button enclosure
<b>SSG1-67</b>	Wall plate box mount 7/8" hole
<b>MCB-01</b>	Normally closed contact block
<b>MCB-10</b>	Normally open contact block
<b>SK615540-1</b>	29.6 x 39 mm blank legend plate
<b>SK615541-1</b>	29.6 x 44.5 mm blank legend plate
<b>SK616021-71</b>	Spare key for key switch

\*Holes are 22.5 mm in a vertical arrangement.

\* Holes are 22.5 mm in a vertical arrangement.

\* Holes are 22.5 mm in a vertical arrangement.

\*\* Custom plates from factory only